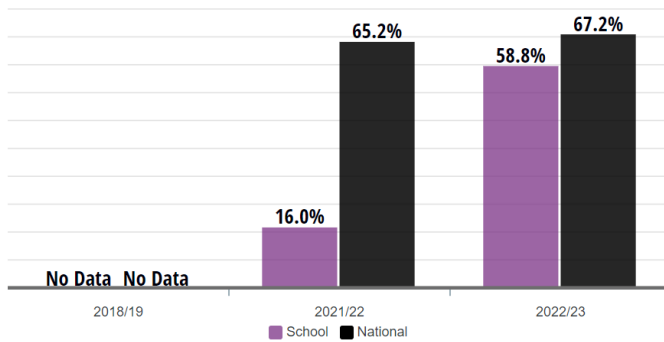


# The Priory Parish Church of England Primary School

## Data overview 2022 - 2023

EYFSP: Good Level of Development | Trend

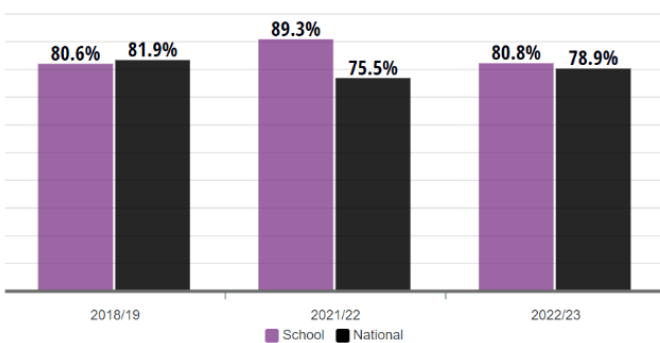


Your school's EYFSP good level of development has **increased by 42.8%** from **16.0%** in 2021/22 to **58.8%** in 2022/23.

This is equivalent to approximately **7 more** pupils achieving a good level of development in 2022/23 compared to 2021/22.

Your school's average for the last 2 academic year(s) is **33.3%**.

Phonics: Expected Standard (Year 1) | Trend

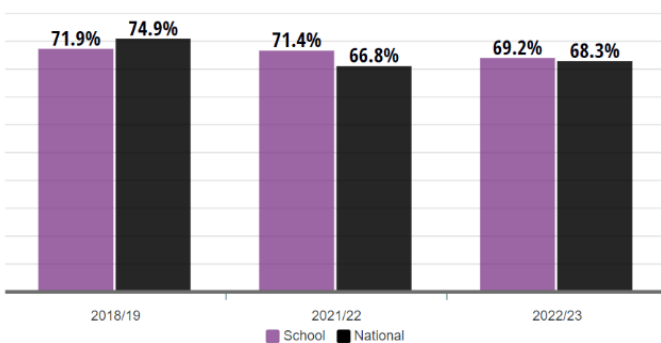


Your school's Year 1 expected standard percentage has **decreased by 8.5%** from **89.3%** in 2021/22 to **80.8%** in 2022/23.

This is equivalent to approximately **2 fewer** pupils achieving the expected standard in 2022/23 compared to 2021/22.

Your school's average Year 1 expected standard percentage for the last 3 academic year(s) is **83.5%**.

Key Stage 1: Reading Expected Standard | Trend



Your school's expected standard percentage in Reading has **decreased by 2.2%** from **71.4%** in 2021/22 to **69.2%** in 2022/23.

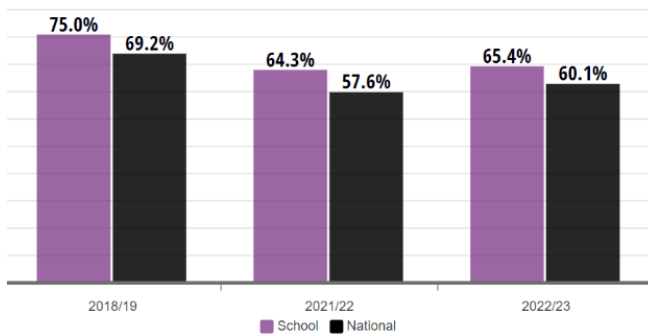
This is equivalent to approximately **1 fewer** pupil achieving the expected standard in 2022/23 compared to 2021/22.

Your school's average for the last 3 academic year(s) is **70.9%**.

# The Priory Parish Church of England Primary School

## Data overview 2022 - 2023

Key Stage 1: Writing Expected Standard | Trend

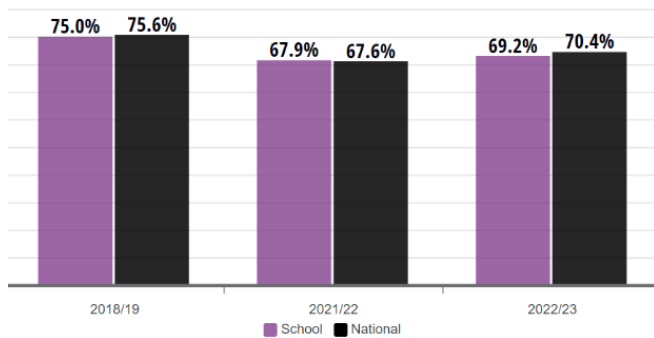


Your school's expected standard percentage in Writing has **increased by 1.1%** from **64.3%** in 2021/22 to **65.4%** in 2022/23.

This is equivalent to approximately **the same number of** pupils achieving the expected standard in 2022/23 compared to 2021/22.

Your school's average for the last 3 academic year(s) is **68.6%**.

Key Stage 1: Maths Expected Standard | Trend



Your school's expected standard percentage in Maths has **increased by 1.3%** from **67.9%** in 2021/22 to **69.2%** in 2022/23.

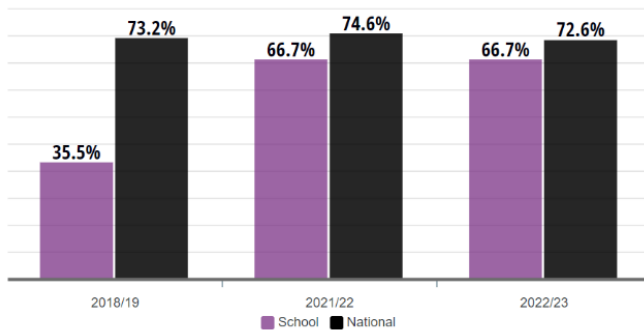
This is equivalent to approximately **the same number of** pupils achieving the expected standard in 2022/23 compared to 2021/22.

Your school's average for the last 3 academic year(s) is **70.9%**.

# The Priory Parish Church of England Primary School

## Data overview 2022 - 2023

### Key Stage 2: Reading Expected Standard | Trend

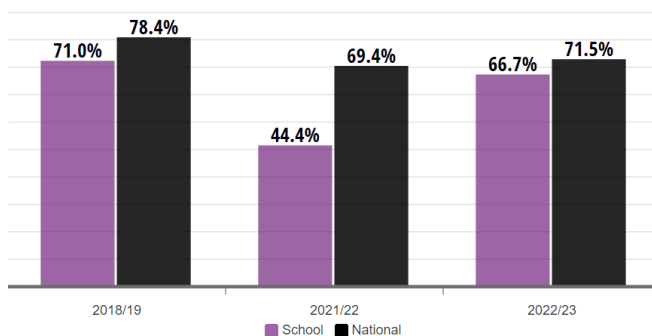


Your school's expected standard percentage in Reading has **remained the same** from **66.7%** in 2021/22 to **66.7%** in 2022/23.

This is equivalent to approximately **the same number** of pupils achieving the expected standard in 2022/23 compared to 2021/22.

Your school's average for the last 3 academic year(s) is **55.7%**.

### Key Stage 2: Writing Expected Standard | Trend

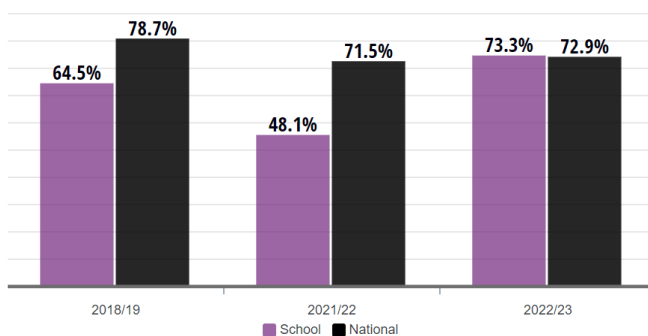


Your school's expected standard percentage in Writing has **increased by 22.3%** from **44.4%** in 2021/22 to **66.7%** in 2022/23.

This is equivalent to approximately **7 more** pupils achieving the expected standard in 2022/23 compared to 2021/22.

Your school's average for the last 3 academic year(s) is **61.4%**.

### Key Stage 2: Maths Expected Standard | Trend



Your school's expected standard percentage in Maths has **increased by 25.2%** from **48.1%** in 2021/22 to **73.3%** in 2022/23.

This is equivalent to approximately **8 more** pupils achieving the expected standard in 2022/23 compared to 2021/22.

Your school's average for the last 3 academic year(s) is **62.5%**.

The Priory Parish Church of England Primary School  
Data overview 2022 - 2023